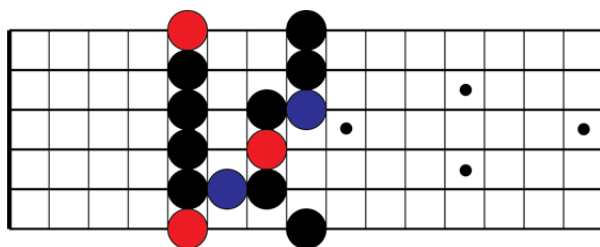
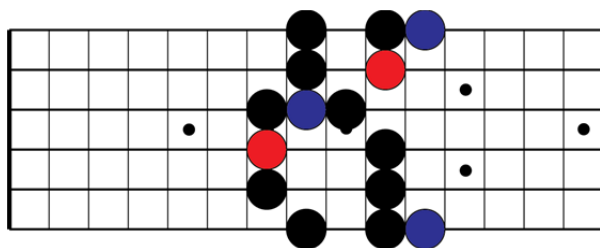


Major And Minor Blues Scale Boxes For Guitar

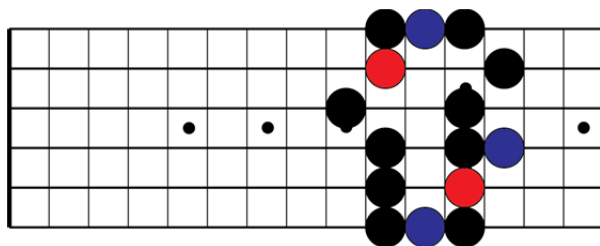
Minor Boxes



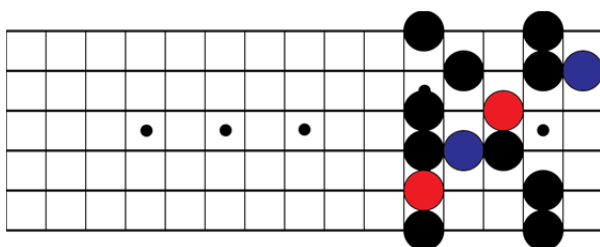
Box 1



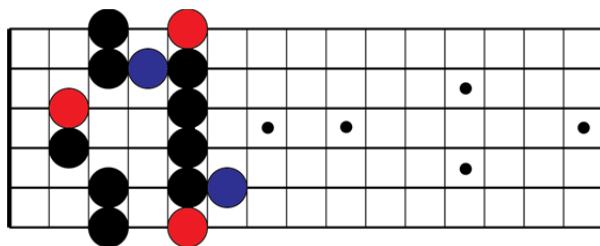
Box 2



Box 3

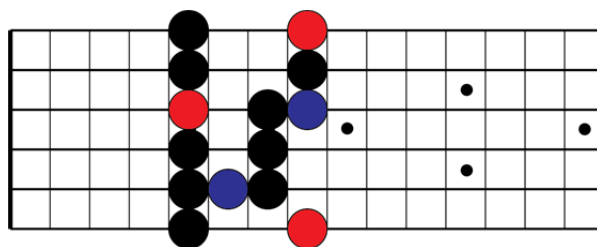


Box 4

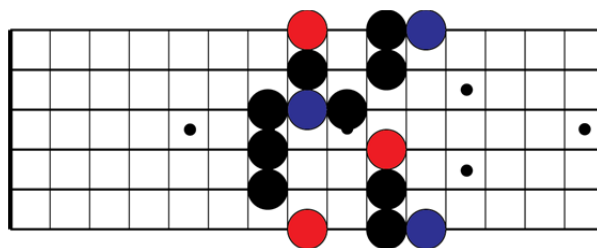


Box 5

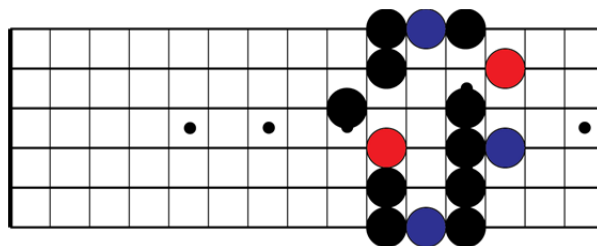
Major Boxes



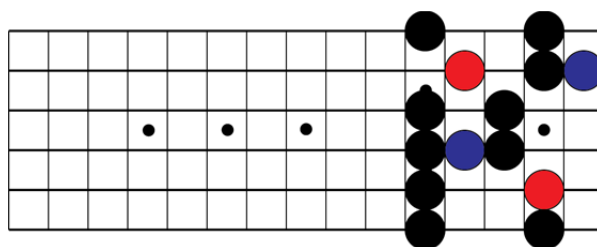
Box 1



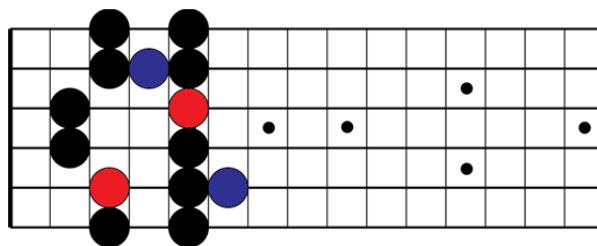
Box 2



Box 3



Box 4



Box 5

How The Diagrams Work..

For all the boxes, the **red** notes are the roots, and the **blue** notes are the “blue notes.” If you leave the blue notes out, you have pentatonic boxes.

As your soloing gets more sophisticated, the less you have to hunt for the box patterns the better off you’ll be. It leaves more of your brain power available to decide what to play when you don’t have to think about how to play it.

Most people learn the boxes first, and that’s a good thing. You have to simply learn the patterns first.

After that, it’s good to start learning the boxes from root notes – and especially root notes up off the 6th string.

If you choose a string and a root note, notice that you’ll have 2 options, a *left facing* and *right facing* option.

Left facing options generally fall to your left on the fretboard, right facing options generally fall to the right.

For example, if your root note is A, and the string is the 4th, the left facing option is box 1 and the right facing option is box 2.

So the best way to practice is to choose a root, a string, a direction (left or right,) and Major or Minor. Then try to find it for yourself.

Whatever method you have to use to find it is worth the time. Remember it’s the process, not always the end result that you want. You may not be able to find what you’re looking for right away this time, but you’ve spent time streamlining the process for later.

I hope this helps you on your journey to be a better soloist and for more information please visit <http://bluesguitarunleashed.com>.