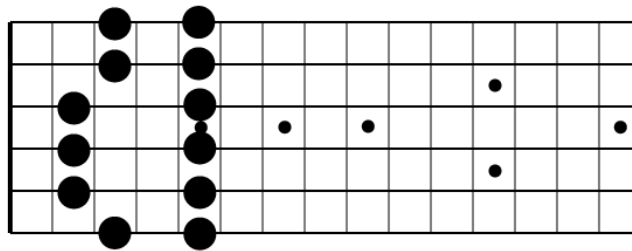


# Lesson 9 – Extending The Blues And Pentatonic Scales (DVD 3)

**In This Lesson:** We'll learn how to extend the blues and pentatonic scales out past the open position to cover some of the other licks in "Down To The Station."

## E Minor Pentatonic, Box 2

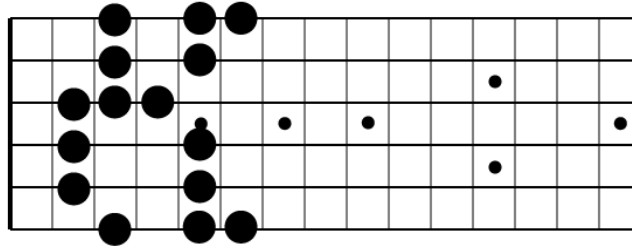
3 5 2 5 2 5 2 4 | 3 5 3 5 5 3 5 3 | 4 2 5 2 5 2 5 3



## E Minor Blues, Box 2

3 5 6 2 5 2 5 2 | 3 4 3 5 3 5 6 5

3 5 3 4 3 2 5 2 | 5 2 6 5 3



Example 41

T  
A  
B 0 3 0 2 0 2 0 2 4 3 5 3 5 3 5 3

T  
A  
B 4 2 0 2 0 2 0 3 0

Example 42

T  
A  
B 0 3 0 1 2 0 2 0 2 3 4 3 5 3 5 6

T  
A  
B 5 3 5 3 4 3 2 0 2 0 2 1 0 3 0

Example 43

The musical notation for Example 43 consists of a treble clef staff and a guitar tablature staff. The treble clef staff is in the key of D major (one sharp, F#) and contains a melodic line with a key signature of one sharp. The tablature staff is labeled 'TAB' and shows fret numbers for the guitar. The notation includes a key signature of one sharp (F#) and a time signature of 4/4. The melodic line features a triplet of eighth notes in the first measure, followed by a series of eighth and quarter notes with triplets. The tablature staff shows fret numbers: 3, 0, 3, 0, 3, 0, 3, 0, 3, 0, 3, 0, 3, 5, 4, 2, 0, 2. The tablature staff is divided into two measures by a vertical line.